



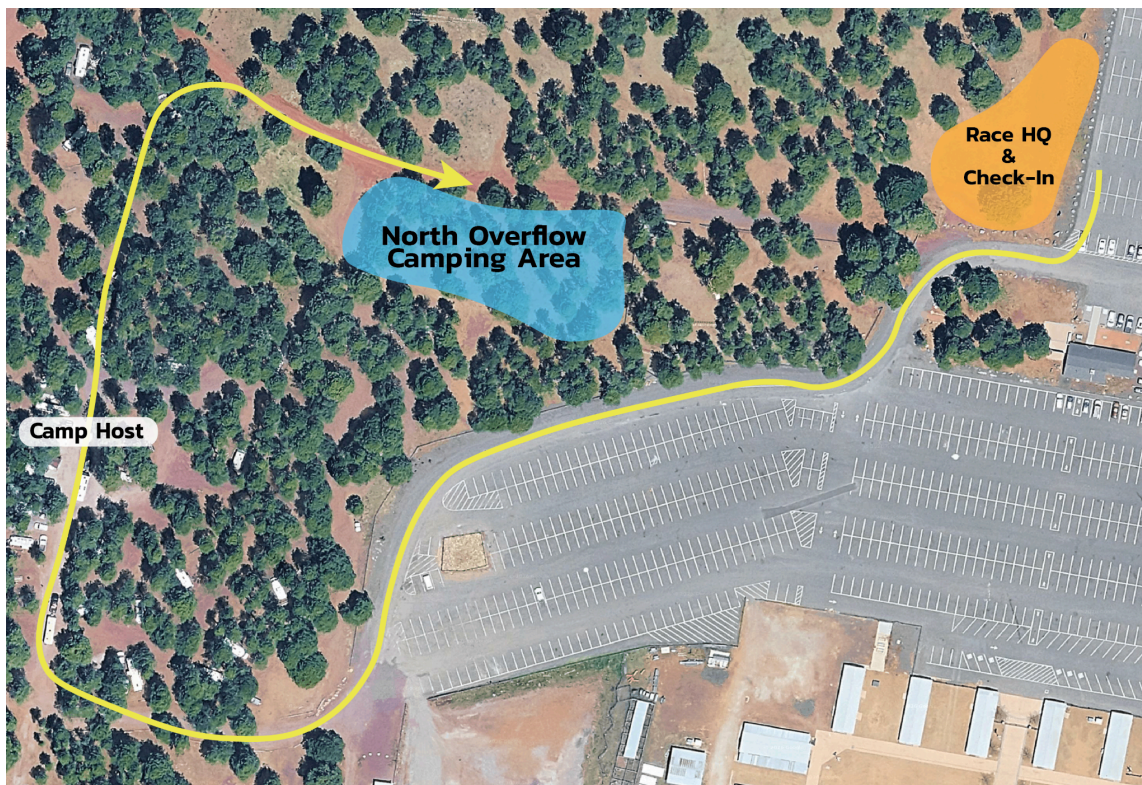
Camping Instructions

Navigate to [Fort Tuthill County Park](#)

Camper Check-In begins at 12:00pm on Friday, June 19
(please don't ask to check in early as we will be busy setting up the race)

Get your Camping Pass from Aaron or another Aravaipa staff member at Race HQ.

Drive through the campground to the North Overflow Area



You do not need to check in with the Camp Host. They may stop you, but as long as you present your camping pass and/or note that you're heading to the North Overflow Area, you'll be good to go.

Once you've arrived at the North Overflow Area, you can unload your stuff and drive back to the parking lot.

THERE IS ABSOLUTELY NO DRIVING IN THE NORTH OVERFLOW AREA.

NOT EVEN A LITTLE BIT.

NOT TO UNLOAD. NOT TO SET UP.

NO EXCEPTIONS.

NADA.

NONE.

Keep your car on the road, unload your belongings, and WALK your stuff to your spot. This was a huge issue last year and we almost lost our ability to camp at this race. If I see that your car has left the road and has entered the camping area, I will take action up to and including disqualification. Please don't make me DQ anyone.

The North Overflow Area is a large group site. Just pick a comfortable spot and make yourself at home. The perimeter will be marked with yellow nylon rope.

If you rented a tent and/or a cot from us, it will be set up and tagged with your name.

There will be two portable restrooms in the camping area. Other than that, this is primitive camping.

Please follow all [Fire Restrictions](#). Flagstaff is currently in STAGE 1 at the time of this writing. Click the link to see what that means.

Camping is currently SOLD OUT. We do not have the capacity to add any additional tents.

If you have any other questions, please email me at aaronbarber@aravaiparunning.com

Thank you for not driving in the North Overflow Area!

Aaron Barber
Race Director

PS: Don't drive in the North Overflow Area :)